



TEXAS A&M UNIVERSITY

DIVISION OF RESEARCH

The Division of Research at Texas A&M University aims to advance and strengthen all aspects of the research enterprise by leveraging research strengths, enhancing resources, fostering collaborations, increasing funding, promoting research integrity, and enhancing communication and visibility of research efforts.



DIVISION UNITS

Centers and Institutes

Organizes researchers to take on major challenges.

Comparative Medicine Program

Offers high quality animal care at affordable cost.

Core Facilities

Provides state-of-the-art instrumentation, technologies and specialized scientific services.

Postdoctoral Affairs

Serves postdocs and the faculty who train them.

Research Communications and Public Relations

Delivers writing, editing, video, web and graphic services to the division and its units.

Research Compliance and Biosafety

Provides guidance in biosafety, animal welfare and human research protection.

Research Development Services

Offers no-cost consultation and training for developing proposals.

Research Enterprise Business Services

Provides support to all division units.

Research Security and Export Controls

Helps to safeguard integrity of research and scholarship.

Special Strategic Projects

Assists with proposals aligned with division and university priorities.

Sponsored Research Services

Works with researchers in the administration of funded projects.

Strategic Initiatives

Coordinates cross-cutting initiatives to advance the research enterprise.



VICE PRESIDENT
FOR RESEARCH
DR. JACK G. BALDAUF

\$1.278B

Fiscal year 2023
research expenditures

#14

Among U.S. public institutions in the National Science Foundation's most recent Higher Education Research and Development Survey

(Based on total research expenditures of \$1.153 billion for fiscal year 2022)

1^{of} 24

Land-, sea-, and
space-grant universities

1^{of} 69

Association of American
Universities members

1^{of} 10

To hold the designation as *both* land-, sea-, and space-grant university *and* Association of American Universities member

OVERSIGHT AND EVALUATION



- ▶ Institutional Animal Care and Use Committee (IACUC)
animalcompliance@tamu.edu
- ▶ Institutional Biosafety Committee (IBC)
ibc@tamu.edu
- ▶ Institutional Review Board (IRB)
irc@tamu.edu

DIVISION CENTERS AND INSTITUTES

Bringing together scholars and scientists to tackle major research challenges.

Comparative Medicine Program

Provides high-quality animal care at affordable costs.

Hagler Institute for Advanced Study

Acts as a catalyst to enrich the intellectual climate.

High Performance Research Computing

Provides computing resources for cutting-edge research.

International Ocean Discovery Program

Manages science operations, archives data and publishes findings.

Microscopy and Imaging Center

Offers cutting-edge technologies for life and physical sciences.

Private Enterprise Research Center

Analyzes policy issues and supports academic research.

Texas A&M Energy Institute

Advances multidisciplinary energy research and partnerships.

Texas A&M Global Cyber Research Institute

Coordinates information security and cyber defense programs.

Texas A&M Institute of Data Science

Takes novel approaches to research and partnerships.

Texas A&M Institute for a Disaster Resilient Texas

Conducts research on disaster risk reduction.

Texas A&M Institute for Genome Sciences and Society

Unites genome scientists with social researchers.

Texas A&M Institute for Neuroscience

Strengthens interdisciplinary and collaborative research.

Texas Real Estate Research Center

Studies real estate financial, socioeconomic and policy issues.

Texas Sea Grant College Program

Supports programs along the Gulf Coast.

vpr.tamu.edu/centers-and-institutes

CORE FACILITIES

Core facilities provide essential resources for groundbreaking research. These fall under six thematic categories:

Environmental and Chemical Sciences

State-of-the art sample collection and analysis

Data Informatics and Computation

Computational hardware, software and expertise across the data sciences

Microscopy and Imaging

Advanced techniques for visualizing everything from molecules to entire animals

Genomics, Sequencing and Flow

Services in flow cytometry and high throughput as well as DNA, RNA and computational technologies

Materials Characterization and Fabrication

Synthesis and characterization of materials like polymers, metals and ceramics

Animal Care and Behavior

High-quality supply, housing and care of laboratory animals along with specialized rodent services



vpr.tamu.edu/core-facilities



INTERNAL FUNDING PROGRAMS

► Arts and Humanities Fellows Program:

Recognizes extraordinary scholarship and creativity among Texas A&M faculty members engaged in the humanities or the creative arts. vpr.tamu.edu/arts-humanities-fellows

► ASCEND (Advancing Scholarly Contributions and Engagement in New Directions):

Includes Research Leadership Fellowships (RLF) to develop junior faculty into research leaders and Targeted Proposal Teams (TPT) to grow new interdisciplinary research collaborations. vpr.tamu.edu/ascend

► PRISE (Program to Recognize and Incentivize Scholarly Excellence):

Promotes collaboration between Texas A&M and Prairie View A&M University faculty to pursue multidisciplinary research and innovation projects. vpr.tamu.edu/panther-rise

► RDF (Research Development Fund):

Provides funding for strategic investments that support the Texas A&M research enterprise and catalyze new ventures. rdf.tamu.edu

STAY INFORMED

► vpr.tamu.edu: Serves as a comprehensive resource for information on research policies, funding opportunities, compliance, strategic initiatives and research-support services at Texas A&M.

► **Research @ Texas A&M:** Showcases research stories and advances. research.tamu.edu

► **Research Bulletin:** Highlights recent research news and achievements.

► **Research Digest:** Collects and distributes vital information to all Texas A&M researchers.

Texas A&M Division of Research
Interdisciplinary Life Sciences Building
301 Old Main Drive / College Station, Texas 77843-1112
1112 TAMU / 979.845.8585



TEXAS A&M UNIVERSITY

Division of Research

vpr.tamu.edu



Texas A&M University is one of the world's leading research institutions, dedicated to advancing knowledge and serving the public good. As a land-grant-, sea-grant and space-grant university, Texas A&M engages in research that spans multiple disciplines and addresses global challenges.

RESEARCH ENTERPRISE STRATEGIC PLAN

- ▶ Outlines the strategic direction and key priorities for Texas A&M's research activities from 2023 to 2030.
- ▶ Focuses on enhancing research infrastructure, fostering interdisciplinary collaborations, promoting innovation and increasing research funding.
- ▶ Identifies six strategic research themes including 21 sub-themes identified for specific focus areas within each strategic research theme.



Community, Culture and Economic Resilience



Emerging Technologies and Innovations



Health and Quality of Life



National Security



Space Exploration

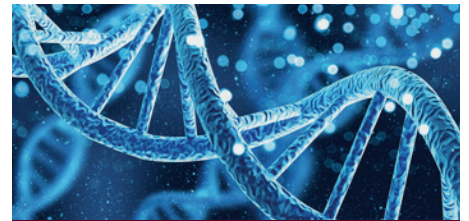


Sustainability and Environment

KEY INITIATIVES AND PROGRAM

Chancellor's Research Initiative (CRI)
Designed to attract and retain world-class faculty by providing funding for research infrastructure and support.

Governor's University Research Initiative (GURI)
State-funded initiative aimed at recruiting nationally recognized researchers to Texas universities.



RESEARCH EXPENDITURES AND RANKINGS

**FIRST RESEARCH INSTITUTION
IN THE STATE OF TEXAS
TO TOP
\$1 BILLION.**
Fiscal year 2021

\$1.278B
Fiscal year 2023
research expenditures

#14

Among U.S. public institutions in the National Science Foundation's most recent Higher Education Research and Development Survey

(Based on total research expenditures of \$1.153 billion for fiscal year 2022)

RESEARCH ENTERPRISE AT A GLANCE



CORE FACILITIES

- ▶ More than 50 core facilities providing access to specialized instruments, technologies, and services.
- ▶ Categories include chemical science technologies, data information and computation, integrated biological and medical translation, materials and fabrication, microscopy and imaging.

CENTERS AND INSTITUTES

More than 130 centers and institutes tackling major research challenges in areas such as climate, environment, computation, education, energy, food and water, global health, infrastructure, materials, manufacturing and public policy.

PARTNER STATE AGENCIES

- ▶ **Texas A&M AgriLife Research:** Conducts agricultural research to improve agriculture in Texas and beyond.
- ▶ **Texas A&M Engineering Experiment Station:** Engages in engineering research and development to address critical state and national challenges.
- ▶ **Texas A&M Transportation Institute:** Conducts research to improve the safety, efficiency and sustainability of transportation systems.

RESEARCH IN COLLEGES AND SCHOOLS

College of Agriculture and Life Sciences: Addresses food security, sustainable agriculture, environmental stewardship and other global issues.

School of Architecture: Engages in urban planning, design, sustainability and the built environment.

College of Arts and Sciences: Conducts research across humanities, social sciences, natural sciences and mathematics, fostering interdisciplinary collaborations.

Mays Business School: Specializes business administration, management, finance, marketing and entrepreneurship.

School of Dentistry: Advances dental sciences, oral health and craniofacial biology.

School of Education and Human Development: Focuses on educational research, human development, learning sciences and educational policy.

College of Engineering: Engages in cutting-edge research in aerospace, biomedical, chemical, civil, computer, electrical, industrial, mechanical, nuclear and petroleum engineering.

School of Engineering Medicine: Integrates engineering with medical sciences to innovate in healthcare technology and medical research.

Bush School of Government and Public Service: Conducts research on public policy, administration, international affairs and public service.

School of Law: Addresses constitutional law, environmental law, intellectual property and international law.

School of Medicine: Advances neuroscience, infectious diseases, cancer and cardiovascular health.

School of Nursing: Engages in research on nursing practices, healthcare delivery, patient outcomes and public health.

School of Performance, Visualization and Fine Arts: Specializes in performance studies, visual arts, digital media and creative technologies.

Irma Lerma Rangel School of Pharmacy: Conducts research in pharmaceutical sciences, drug development, pharmacology and clinical pharmacy.

School of Public Health: Focuses on public health research, epidemiology, health policy, environmental health and health behavior.

School of Veterinary Medicine and Biomedical Sciences: Advances veterinary sciences, animal health, biomedical sciences and translational medicine.

FACULTY AWARDS AND RECOGNITION

- 33** National Academy of Engineering Members
- 17** National Academy of Sciences Members
- 6** National Academy of Medicine Members
- 3** Nobel Prize Laureates
- 2** Wolf Prize Recipients

- 16** American Academy of Arts & Sciences Members
- 85** American Association for the Advancement of Science Fellows
- 8** American Academy of Nursing Fellows
- 18** National Academy of Inventors Fellows



Source: Faculty Affairs

Texas A&M Division of Research
Interdisciplinary Life Sciences Building
301 Old Main Drive / College Station, Texas 77843-1112
1112 TAMU / 979.845.8585



TEXAS A&M UNIVERSITY
Division of Research

vpr.tamu.edu