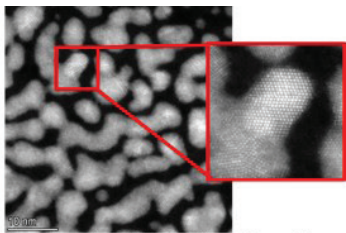


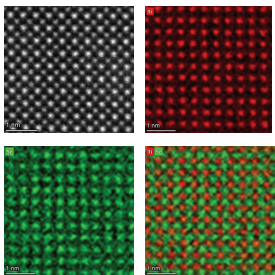
MATERIALS

Characterization Facility

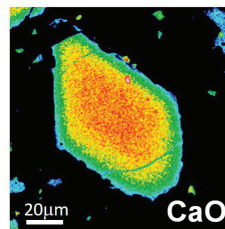
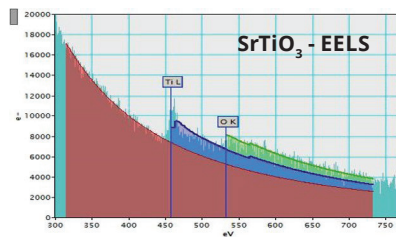
The Materials Characterization Facility (MCF) trains students to use state-of-the-art instrumentation in support of their research and educational goals and provides infrastructure and centralized resources for faculty across campus who wish to apply for funding for new instrumentation that further enhances materials science and engineering at Texas A&M University.



Atomic resolution HAADF-STEM image of Au particles at 60 kV



Atomic resolution HAADF-STEM image and EDS maps of SrTiO₃ at 300 kV



ABOUT *the* INSTITUTE

The Materials Characterization Facility (MCF) at Texas A&M is a core user facility that provides researchers with access to high-end instrumentation essential for fundamental studies of the surface and interfacial properties of materials. The facility is supported by the Division of Research, the College of Engineering/TEES, and the College of Science, and it is staffed by research scientists with expertise in areas providing fundamental research training to students and faculty on instruments, as well as consultation of measurements needs and data interpretation. In addition to research training, the facility also supports educational activities involving lab tours, workshops, hands-on demonstrations, and STEM outreach through their open house and lunchtime seminar series. The MCF also supports collaborative research projects with outside industry users.

MILADIN RADOVIC

Director

3003 TAMU
mradovic@tamu.edu
979.845.5114

YORDANOS BISLAT

Facility Manager

3471 TAMU
ybisrat@tamu.edu
979.862-5958

