



TEXAS A&M

Global Cyber Research Institute



## Elevating efforts to secure our digital world.

**Who We Are** The Texas A&M Global Cyber Research Institute (GCRI) endowed by **Ray Rothrock '77** and **Anthony Wood '90** was created in 2021 to elevate Texas A&M's efforts in the broad information security area.

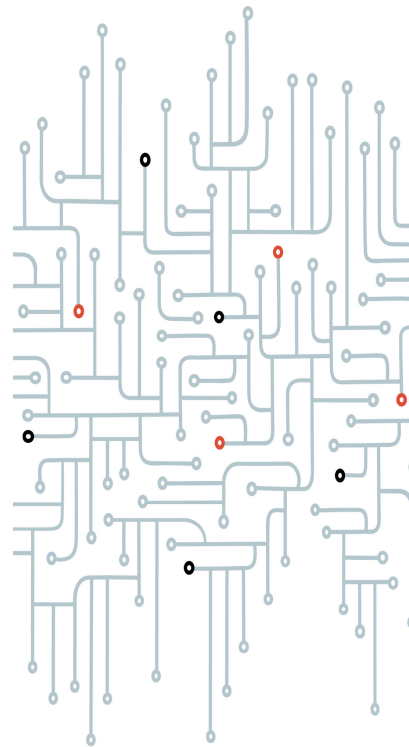
**Mission** The broad mission of GCRI is to provide a platform for research, thought-leadership, engagement, and education and workforce development in cyber defense and information security.

### Specifically, We Seek To Engage:

- Research to mitigate information security risks for critical cyber physical infrastructure.
- Social and Behavioral sciences, law and policy as they relate to information security.
- Outreach nationally and globally.
- In accordance with Texas A&M's land-grant mission, engage in education and workforce development to increase availability of talent across the globe.

## GCRI THRUST AREAS

- **Research Engagement** Many systems, services and facilities we depend on involve cyberspace, opening up a wide range of opportunities for determined and malicious adversaries. Providing comprehensive, principled and scientifically sound mechanisms and techniques to protect and safeguard such is at the core of GCRI's mission through its Research Engagement thrust.
- **Cross-Disciplinary Engagement** Cybersecurity challenges cannot be fully addressed by technical solutions alone. In this thrust of GCRI, we take a holistic and cross-disciplinary approach to cybersecurity that integrates the cyber domain with various fields such as engineering, social and behavioral sciences, economics, health and medical sciences, criminal justice, law, policy, and ethics. The fundamental principles from these disciplines advances solutions that will be acceptable in all aspects of society.
- **National and Global Engagement** The GCRI will capitalize on the unique infrastructure and organization of Texas A&M University System to collaborate with cybersecurity researchers in the United States and across the globe. Initial efforts are focused on developing collaborative opportunities with the National Laboratories utilizing existing relationships with Los Alamos, Sandia, and Lawrence Livermore National Laboratories.
- **Education & Workforce Development** Innovation through education and experiential collaboration will advance the collective cybersecurity knowledge, capabilities and practices. This thrust of the GCRI is accomplished through novel and innovative cybersecurity education along with mutually beneficial academic, governmental, and commercial partnerships.



### CONTACT

**Dr. Sandip Roy**

Director GCRI  
sandip@tamu.edu  
gcri.tamu.edu

*The Texas A&M Experiment Station (TEES) is a state research agency that solves problems through applied engineering research and development in collaboration with industry, government and academia. As part of The Texas A&M University System, we are connected with world-class researchers and facilities throughout the Texas A&M System.*